

MADSUR



Multi-parameter water quality testing system

MDS-GS6008

Dedicated to secondary water supply

迈德施科技

水质分析仪器制造商，集仪器仪表研发、生产、销售于一体的公司
Water quality analysis instrument manufacturer, set instrument research and development, production and sales of the company

MADSUR



[MADSUR]

<https://www.madsurgroup.com/> | <https://madsur.en.made-in-china.com>

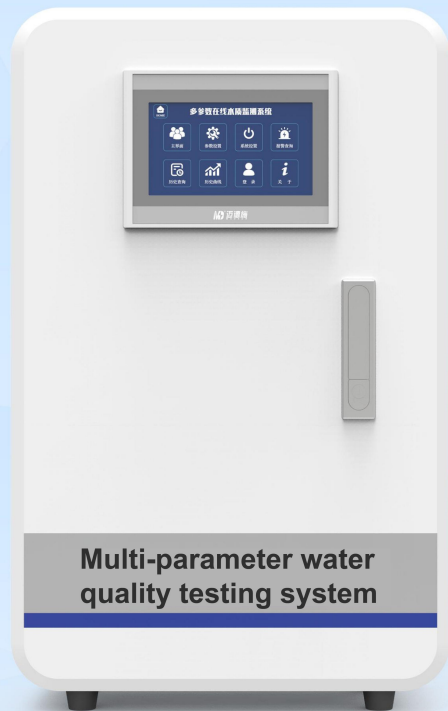
Industry fields: Environmental testing | Laboratory equipment | Educational institutions | Food safety | Environmental chemicals | Medicine | Clinical testing | Environmental monitoring | Industrial manufacturing and other fields



Multi-parameter water quality testing system

MDS-GS6008

Dedicated to secondary water supply



Multi-parameter water quality testing system

Production Introduction

The multi-parameter online water quality monitor, developed by MADSUR, utilizes sensor and IoT technologies. It utilizes fully digital electrodes as detection elements, resulting in high sensitivity and stable performance. It features a proprietary flow cell and a 7-inch HD display, capable of simultaneously measuring multiple parameters. This allows for real-time monitoring and data management, as well as access to alarm systems. It is suitable for monitoring swimming pools, drinking water systems, aquaculture, and other applications.

Secondary drinking water supply (hereinafter referred to as secondary water supply) refers to the transfer of tap water for drinking purposes through water storage, pressurization, and purification facilities. The safety of drinking water quality is crucial to the health of residents. To ensure the safety of drinking water, the national health authorities have issued strict laws and regulations to strengthen water quality testing and management. These regulations specify the location, testing items, and frequency of water quality sampling points for all types of water supply, especially secondary water supply facilities. The national health authorities stipulate that responsible water supply units must regularly test water quality and register the results.

1. Sampling points are located at the raw water inlet, equipment outlet, and terminal water supply.
2. Water Quality Inspection Items: Mandatory Test Items: Color, Turbidity, Odor and Odor, Visible Content, pH, Coliform Group, Total Bacteria, Residual Chlorine; Optional Test Items: Total Hardness, Chloride, Nitrate Nitrogen, Volatile Phenols, Cyanide, Arsenic, Hexavalent, Iron, Manganese, Lead, and UV Intensity; Additional Test Items: Ammonia Nitrogen, Nitrite Nitrogen, and Oxygen Consumption.

The MADSUR Multi-Parameter Water Quality Analyzer can be configured with matching electrodes based on user needs and operating conditions to measure a variety of parameters, such as pH, dissolved oxygen, conductivity/salinity, suspended solids, ozone, chlorine dioxide, turbidity, nitrite, COD, ammonia nitrogen, and color. Equipped with computer data software, it offers online testing, curve analysis, storage, remote computer monitoring, and real-time mobile app access.

Applications



High-rise Residential Buildings



Municipal Water Supply



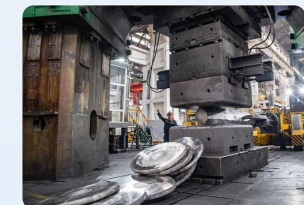
Agricultural Irrigation



Urban Construction



Commercial Buildings



Industrial Production



<https://www.madsurgroup.com>
<https://madsur.en.made-in-china.com>

Industry fields: Environmental testing | Laboratory equipment | Educational institutions | Food safety | Environmental chemicals | Medicine | Clinical testing | Environmental monitoring | Industrial manufacturing and other fields

Three core sectors

Intelligent new system Integrated operation





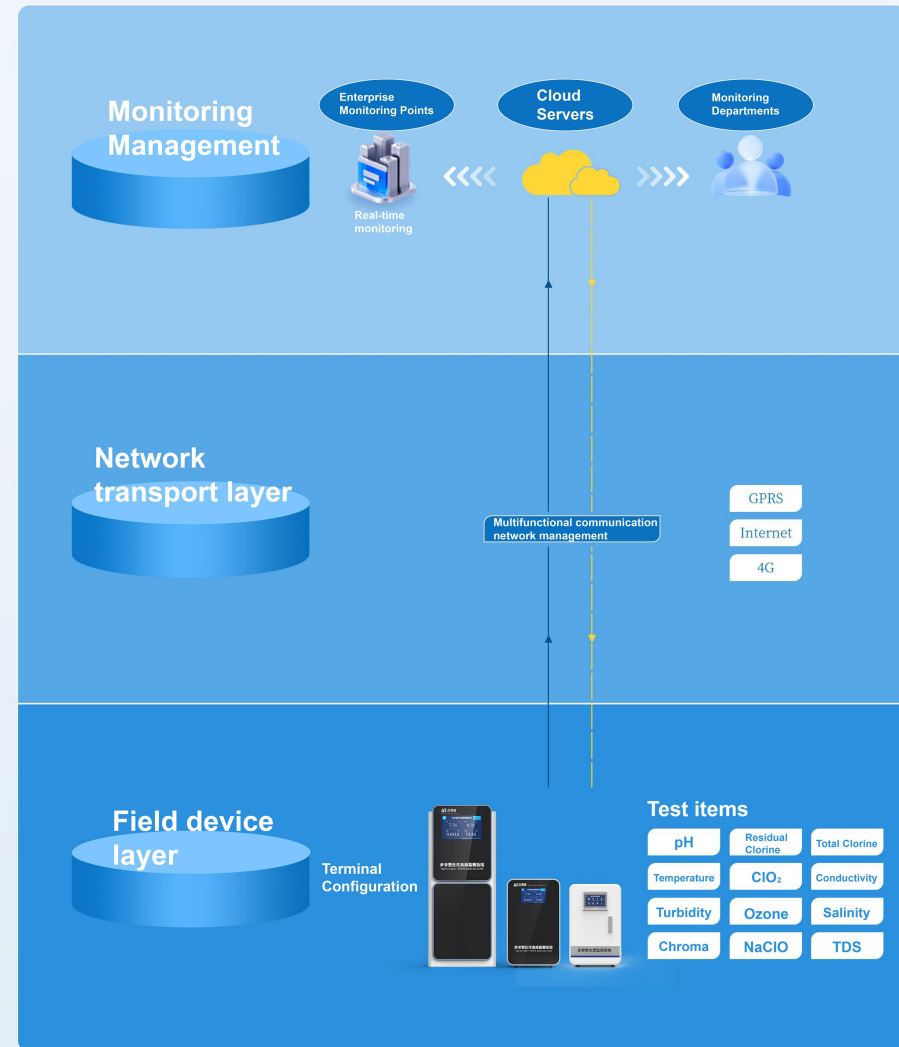
Water quality data collection layer



Water quality data network communication layer




Water quality online cloud platform




Wireless transmission allows for instant viewing of monitoring data.

Real-time data upload provides immediate warnings of abnormal conditions. This enables "real-time monitoring, early warning, and timely decision-making," achieving scientific and information-based water quality management.






All day 24 hours Real-time monitoring



Over-limit alarm



Timely response and processing



【MADSUR】

<https://www.madsurgroup.com/> | <https://madsur.en.made-in-china.com>

Industry fields: Environmental testing | Laboratory equipment | Educational institutions | Food safety | Environmental chemicals | Medicine | Clinical testing | Environmental monitoring | Industrial manufacturing and other fields

Technical Parameters

PH	Measuring range	0.00~14.00pH
	Resolution	0.01pH
	Measuring accuracy	<0.1pH
Residual chlorine/ Ozone Chlorine dioxide Total chlorine Sodium Hypochlorite	Measuring range	0-5/20mg/L
	Resolution	0.001mg/L
	Measuring accuracy	±3% (DPD comparison error ±10% or ±0.05mg/L, whichever is greater)
Conductivity Salinity TDS	Measuring range	0~10,000µS/cm
	Resolution	0.1µS/cm
	Measuring accuracy	<0.5%
Turbidity	Measuring range	0~20NTU
	Resolution	0.0001NTU(<1NTU);0.01NTU(≥1NTU)
	Measuring accuracy	±0.02NTU or 2% (Take the larger value)
Chroma	Measuring range	(0-500)Hazen,(0-500)NTU
	Resolution	0.5Hazen
	Measuring accuracy	±2%FS
Temperature	Measuring range	0-60°C
	Resolution	0.1°C
	Measuring accuracy	±0.3°C
4-20mA current output (optional)	4-Channel Current	
Operating conditions	Ambient temperature: 5 to 40 °C; Relative humidity: <90% RH	
AC power supply	186~240V 50/60Hz	
Relay output	Load AC 220V 10A	
Display resolution	7-inch Touch Display	
Dimensions	450*205*700mm (L*W*H)	

Product Features



Real-Time Monitoring



Cloud Connected



4G Network



View on Phone



Watchdog Feature

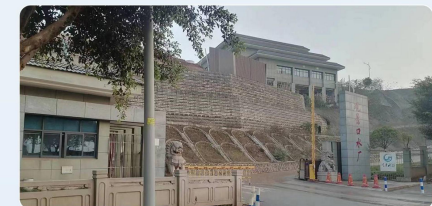
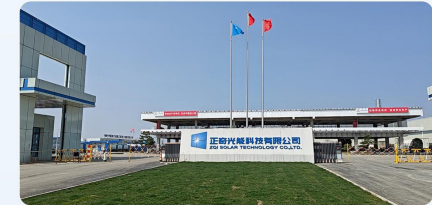


Alerts & Notifications



Customizable

Application Cases



[MADSUR]

<https://www.madsurgroup.com/> | <https://madsur.en.made-in-china.com>

Industry fields: Environmental testing | Laboratory equipment | Educational institutions | Food safety | Environmental chemicals | Medicine | Clinical testing | Environmental monitoring | Industrial manufacturing and other fields